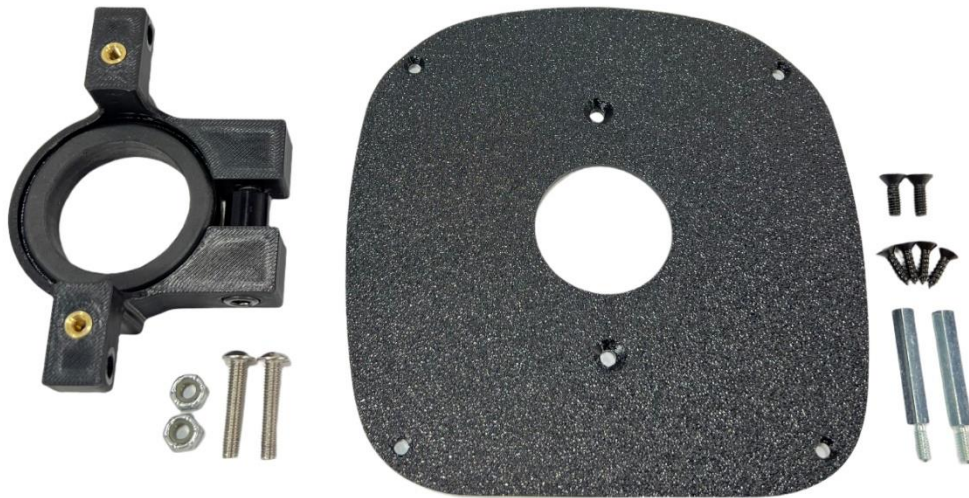


# 1990-1993 Mustang Multi-Function Switch Mount & Bezel Plate Kit



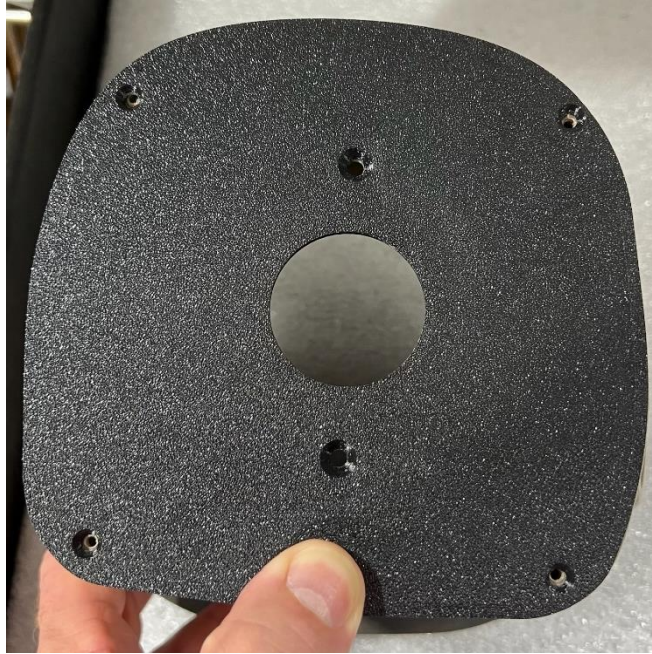
Before starting the installation, make sure you have received all the components pictured above. This includes the following:

- Black ABS Multi-Function Switch Mount
  - Make Sure Thread inserts, clamp spacer, clamp nut, and clamp bolt are in the clamp
- Qty 2: 10-32 x 1" Long Bolt
- Qty 2: 10-32 Locknut
- Black ABS Bezel Plate
- Qty 2: 8-32 x 1/2" Long Black-Oxide Bolt
- Qty 4: #8 Black-Oxide Screw
- Qty 2: 1" Long 8-32 Stand Off

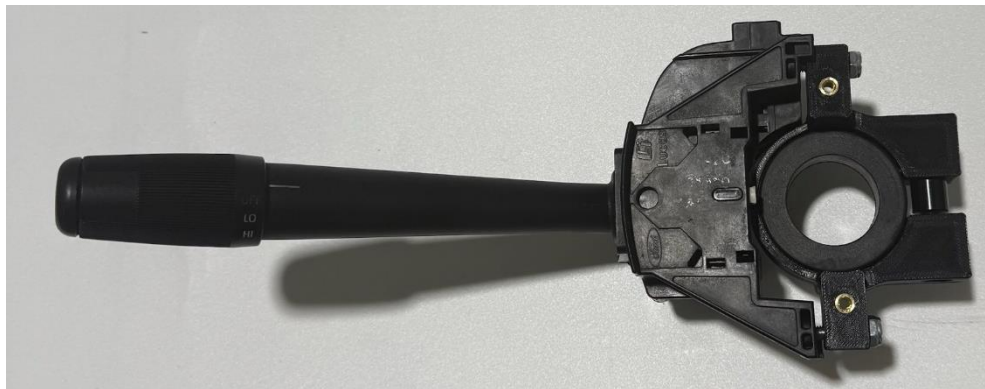
## Tools Needed

- 3/32" Drill Bit
- Drill
- Phillips Head Screwdriver
- 3/16" Allen Wrench
- 1/8" Allen Wrench
- 3/32" Allen Wrench
- 3/8" Socket
- 1/4" wrench
- Ratchet

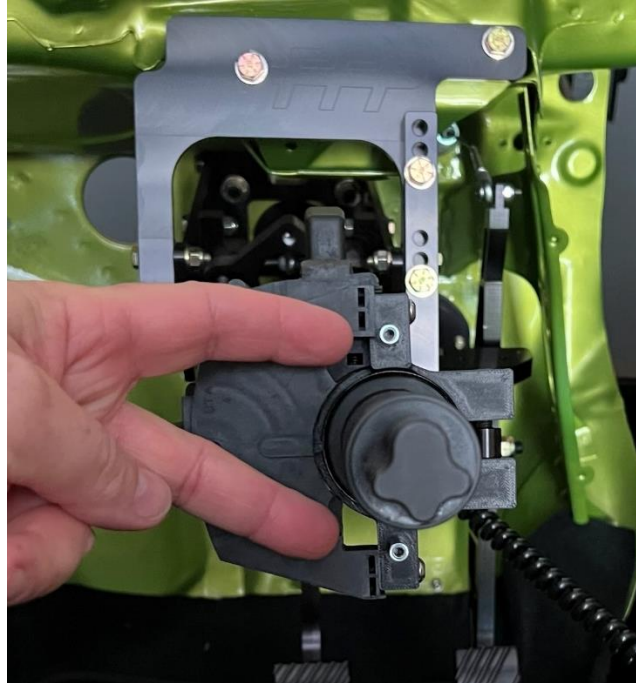
Now that all parts have been confirmed, we can start the process of mounting the Bezel Plate to your column's Bezel. With your factory bezel fully clipped together and fastened with factory screws, carefully lay the FFP Customs bezel plate on top of your factory bezel. Pay close attention to the edges of our cover plate; it should line up to the edge of your factory bezel. Once you're happy with the placement of the bezel plate, carefully mark all 4 holes and drill to 3/32". The pictures below show how our plate and your bezel should line up.



Once you have your 4 mounting screw holes drilled, you can now move on to mount your factory multi-function switch to our steering column clamp using the included 10-32 bolts and 10-32 locknuts. The orientation of the switch after it is installed can be seen in the picture below.



With the switch now properly mounted, you can now slide the clamp on to your steering column tube. Make sure the gold thread inserts are centered over the center of your steering column tube. Thread the 8-32 thread stand offs into the thread inserts on the steering column clamp and tighten with ¼" wrench. It should be noted that the clocking of this clamp will determine the clocking of your bezel once you install the bezel and bezel plate. We've found that it can be helpful to bolt the bezel plate on and use the top half of the factory bezel to align to your factory dash, keep in mind your steering column location/angle plays a role in this. Once you're happy with the alignment of the clamp, you can tighten the clamp bolt using the 3/16" allen wrench. The correct orientation of the clamp with the multifunction switch installed and the thread stand offs can be seen below.



With the clamp installed, now use the 2 included allen head 8-32 bolts to mount the bezel plate to the clamp. Now that the bezel plate is installed, you can now bring the 2 halves of the factory bezel plate back separately and fasten the halves using the factory mounting screws. With the halves now fastened together, line the 4 holes you drilled to the 4 holes in the bezel cover plate and use the 4 included Phillips head #8 screws to mount the factory bezel to our bezel cover plate **DO NOT OVER TIGHTEN THE PHILLIPS HEAD SCREWS**. Congratulations, you have finished the installation of the 1990-1993 Mustang Multi-Function Switch Mount & Bezel Plate Kit.



(813) 928-1449

[www.FFPcustoms.com](http://www.FFPcustoms.com)



If you have made it this far, we trust you have installed the multi-function switch and bezel plate successfully. However, if you have hit a snag or have questions, don't hesitate to contact us via phone or social media. We would rather you call us for clarification instead of being frustrated with the installation.

Like all FFP Customs products, this product was designed and made here in the USA.

FFP Customs

(813) 928-1449

[www.ffpcustoms.com](http://www.ffpcustoms.com)